

ImmigrationPro Installation Instructions Windows 7 & 8

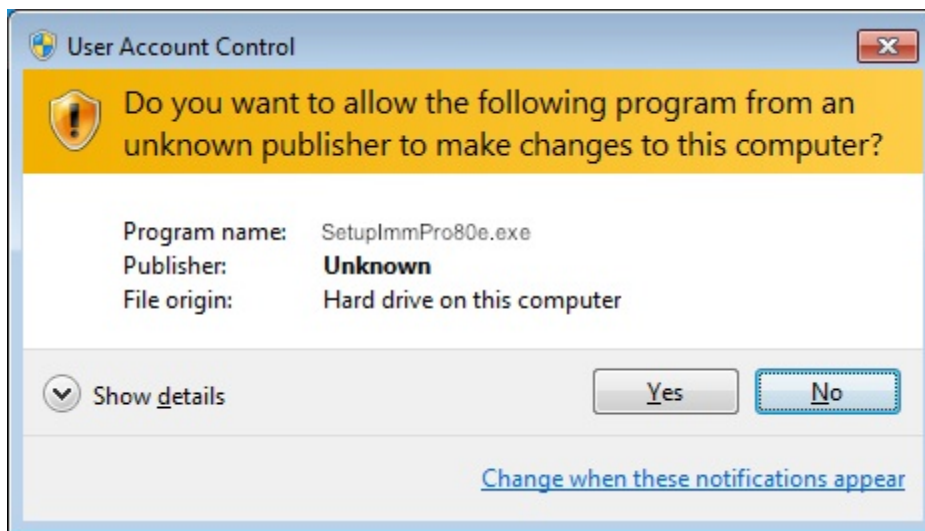
Internet Download

Click on the download link and save the *SetupImmPro80e.exe* to your desktop. After this file has copied to your desktop, double-click on the file to launch the installation program.

From the CD

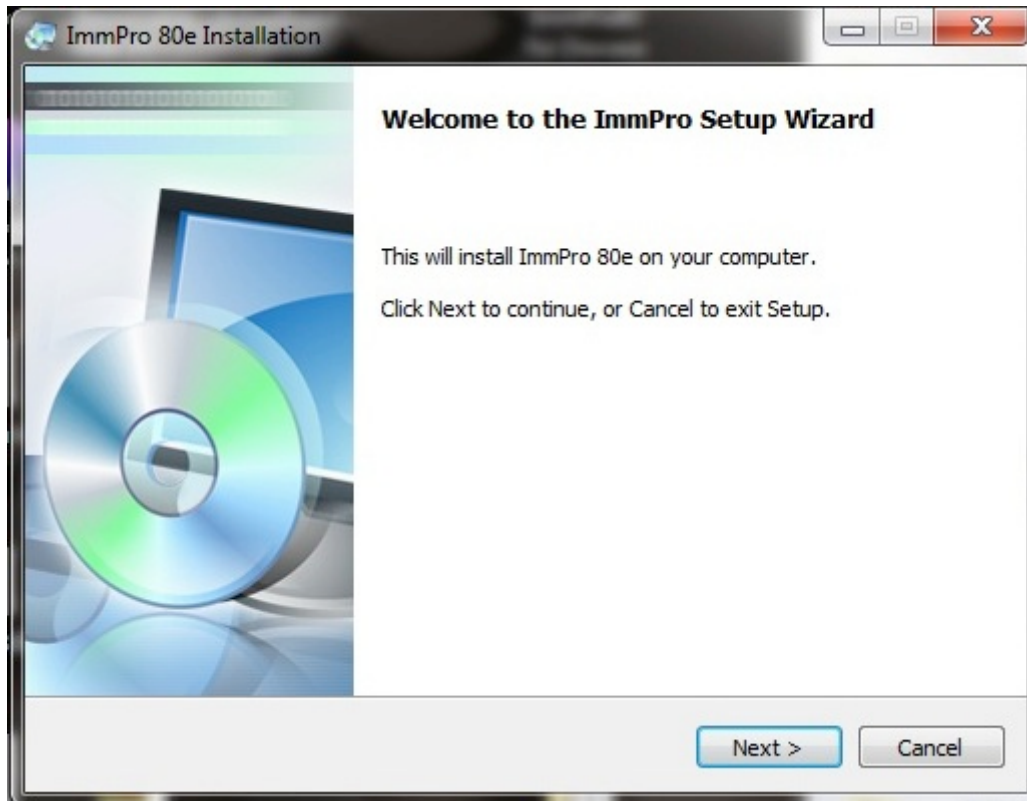
Double-click on the *SetupImmPro80e.exe* to launch the installation program.

The 1st screen that will pop up is:



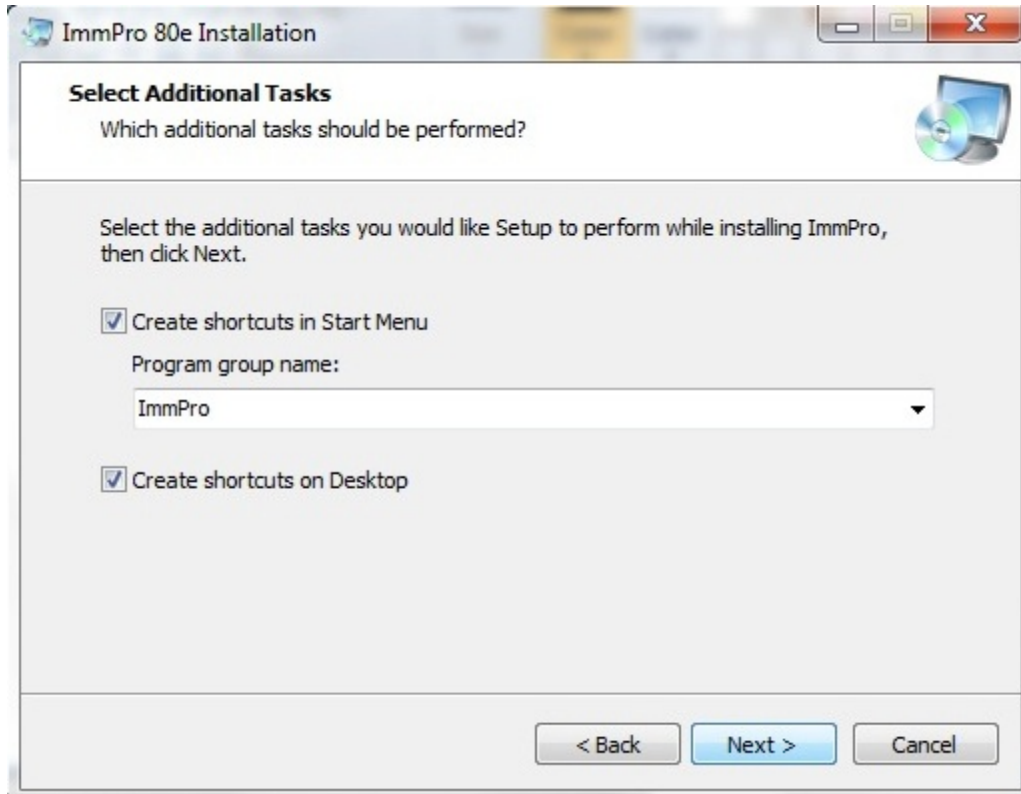
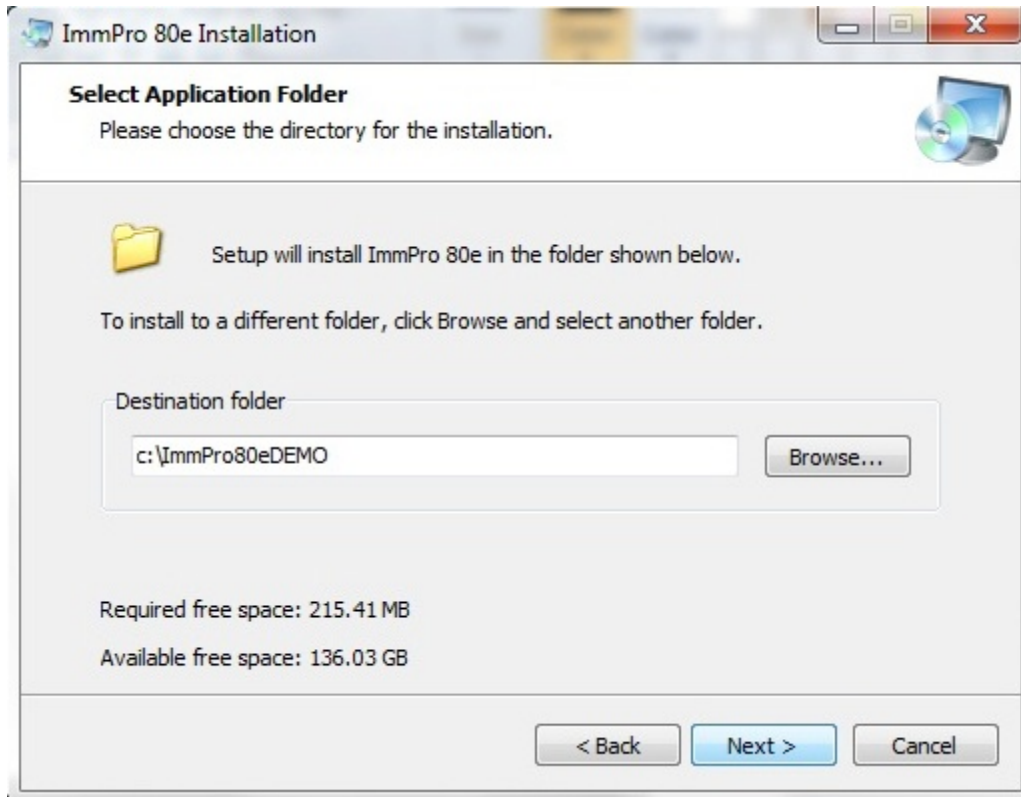
Click on the Yes button.

Next, this screen will appear:



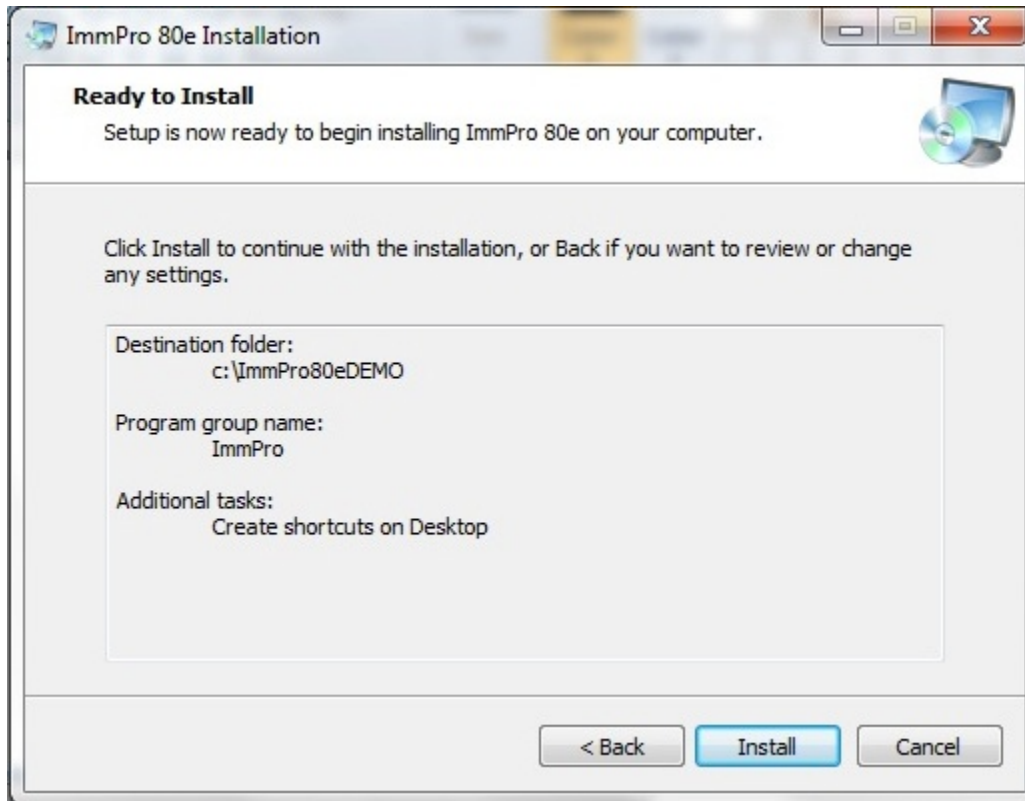
Click on the Next button.

The next 2 screen to appear will be these two:



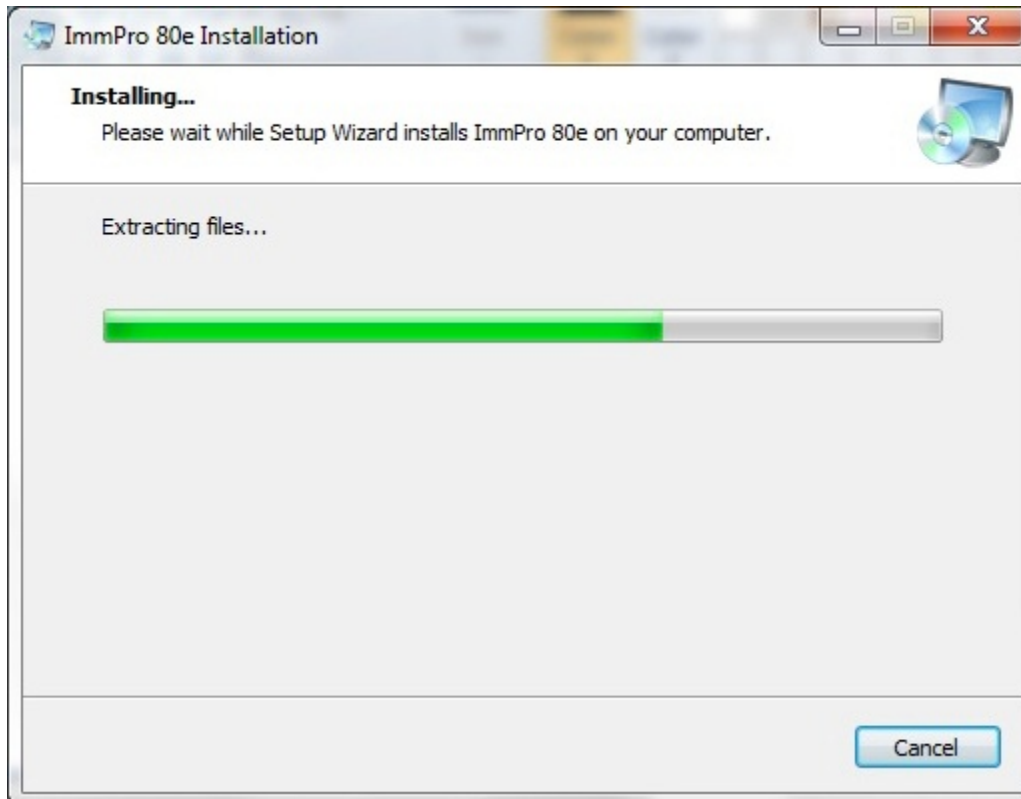
Click on the Next buttons.

Then, this screen will appear:

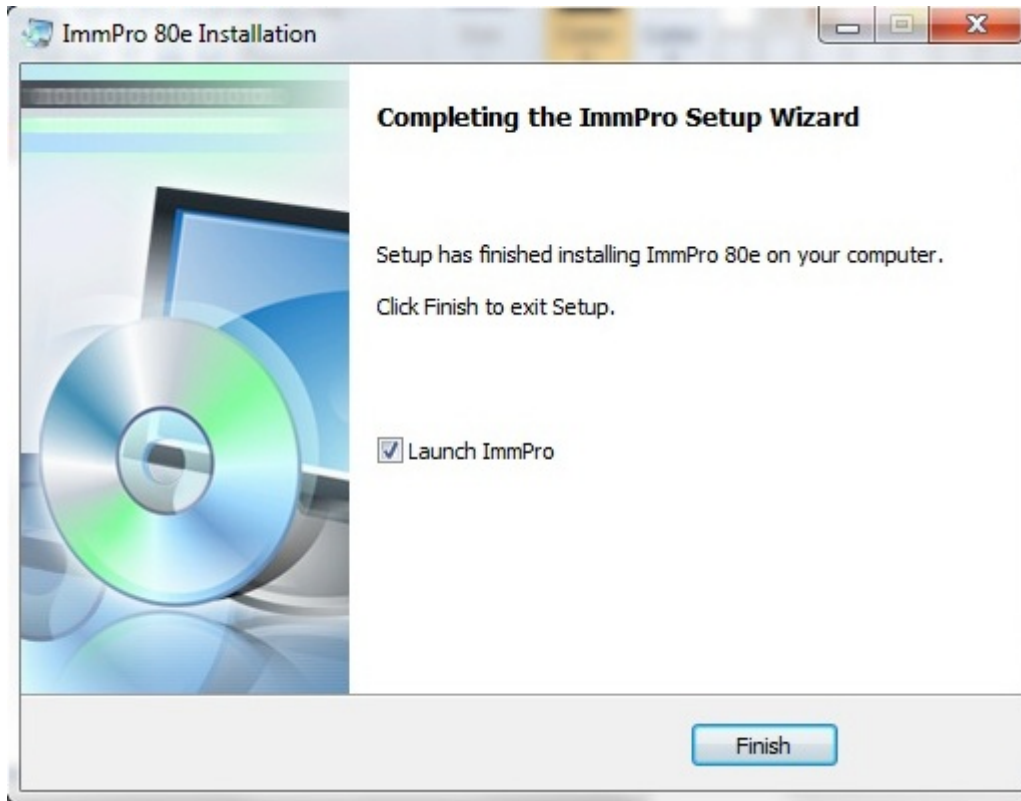


Click on the Install button.

Then a progress bar in the next screen shows the installation progress.



The last screen to appear shows that the installation to your 'C' drive is complete. You can launch the program from that last window.



You can also find the ImmigrationPro program in your Start Button (lower left corner) under 'Programs / All Programs / ImmPro80E'
In the same place you will find an uninstall icon to remove the program.